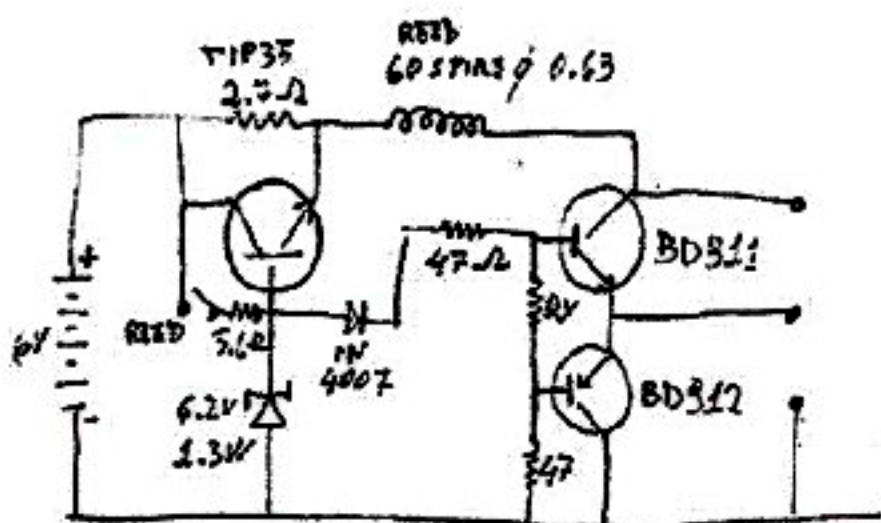
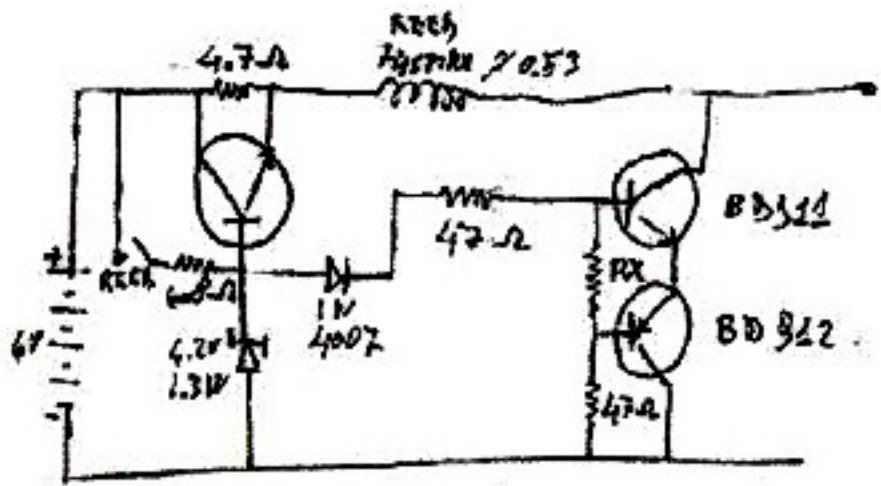


# Alimentatore per RTX serie P-105

Per chiarimenti chiedere a Pietro Noto  
 pietronoto@tiscali.it



R107  
 $22 < R_X < 33 \Omega$   
 TALE CHE:  $\begin{cases} 6.2V \text{ INPUT} \\ I_{RX} \approx 1A \end{cases}$



R105  
 $18 < R_X < 27$   
 TALE CHE:  $\begin{cases} 6.2V \text{ INPUT} \\ \text{CAP. SCAL. OFF} \\ I_{RX} \approx 700mA \end{cases}$

*Ed. Pietro Noto*